



# SLE 26-003 Electrical Sale





# SLE 26-003 Electrical Sale





# SLE 26-003 Electrical Sale





# SLE 26-003 Electrical Sale





# SLE 26-003 Electrical Sale





# SLE 26-003 Electrical Sale





# SLE 26-003 Electrical Sale





# SLE 26-003 Electrical Sale





# SLE 26-003 Electrical Sale





# SLE 26-003 Electrical Sale





# SLE 26-003 Electrical Sale





# SLE 26-003 Electrical Sale



IIP 50

IIP 50  
2 Pallets



GPS51

**HPS Titan N**  
Hammond Power Solutions  
Dry Type Encapsulated Transformer  
Transformateur de Type Sec Encapsulé

Geolph, ONT Baraboo, WI  
Compton, CA Monterrey, MX

Part No. **TN2A0015K9KF**

310W E298346 0342315899  
US LISTED  
GENERAL PURPOSE TRANSFORMER FOR USE IN HAZARDOUS LOCATIONS  
ABS PDA CERTIFIED  
19-H1684283 (REV.)

Quot Ref. / Ref. du Client	Serial No. / No. de Serie	<b>CB01086830</b>		VOLTS	CURRENT	% RATIO VOLTAGE TRANSFORMER NOMINALE	CONNECTION EACH PHASE CONNECTION	HAZARDOUS LOCATIONS CLASS - Div. 2 GROUPS A, B, C & D TEMPERATURE CODE: T3A	
Phase	HV/HT	<b>480V</b>							604
Type	Oil	<b>10 kV</b>		492	17.6	102.5	2	WARNING - EXPLOSION HAZARD. DO NOT DISCONNECT EQUIPMENT WHILE THE CIRCUIT IS LIVE UNLESS THE AREA IS FREE OF IGNITABLE CONCENTRATIONS. AVERTISSEMENT: RISQUE D'EXPLOSION. NE DÉBRANCHER PENDANT QUE LE CIRCUIT EST SOUS TENSION OU À MOINS QUE L'EMPLACEMENT NE SOIT EXEMPT DE CONCENTRATIONS INFLAMMABLES.	
Cooling / Refroidissement	Term Bornes	<b>H1 H2 H3</b>		480	18.0	100	3		
kVA	LV/BT	<b>208Y/120V 41.6A</b>		456	19.0	95	5		
Temp Rise / Surchauffement	Oil	<b>10 kV</b>		444	19.5	92.5	6		
Temp Class / Classe Temp	Term Bornes	<b>X0 X1 X2 X3</b>		432	20.0	90	7		
Winding / Enroulement									
Frequency / Fréquence Hz									
Impedance % / Impédance %									
Insul Type / Type de collage	Weight / Poids	<b>295</b>							

SEISMIC QUALIFICATIONS:  
SDS - 0100 - 100%IC 20 IN/GRACE  
SDS - 2.0g 27h = 1 Ip = 1.5

**DANGER PELIGRO**

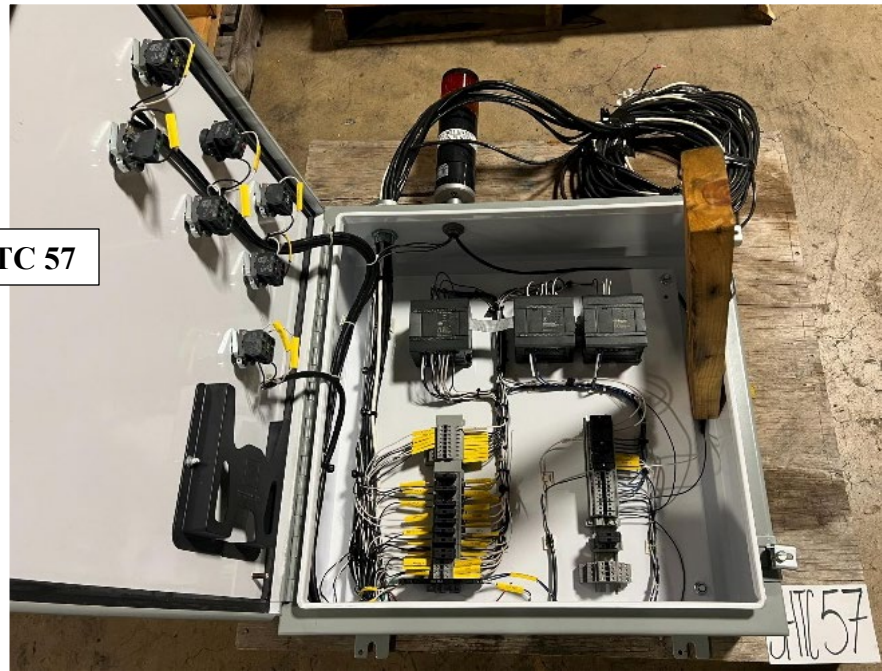


# SLE 26-003 Electrical Sale





# SLE 26-003 Electrical Sale





# SLE 26-003 Electrical Sale



**GPS 62**



**GPS 62A**



## SLE 26-003 Electrical Sale



**GPS 63**



**GPS 64**





# SLE 26-003 Electrical Sale



GPS 65



GPS 66



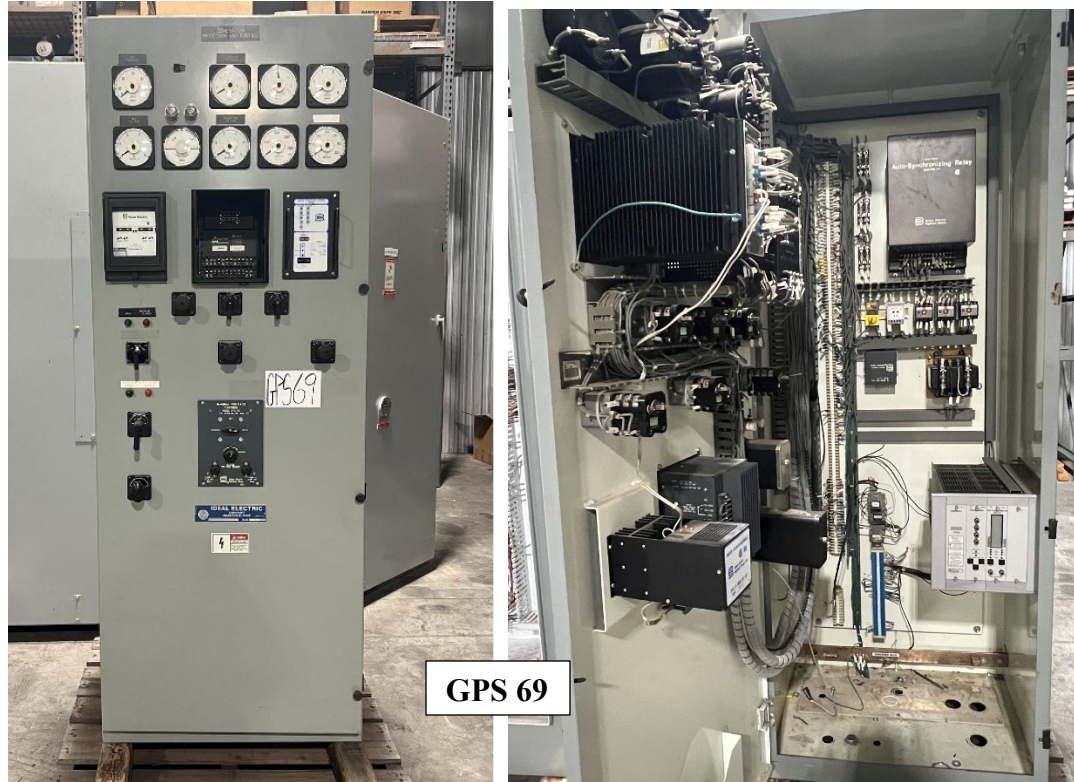


## SLE 26-003 Electrical Sale





# SLE 26-003 Electrical Sale



**GPS 69**

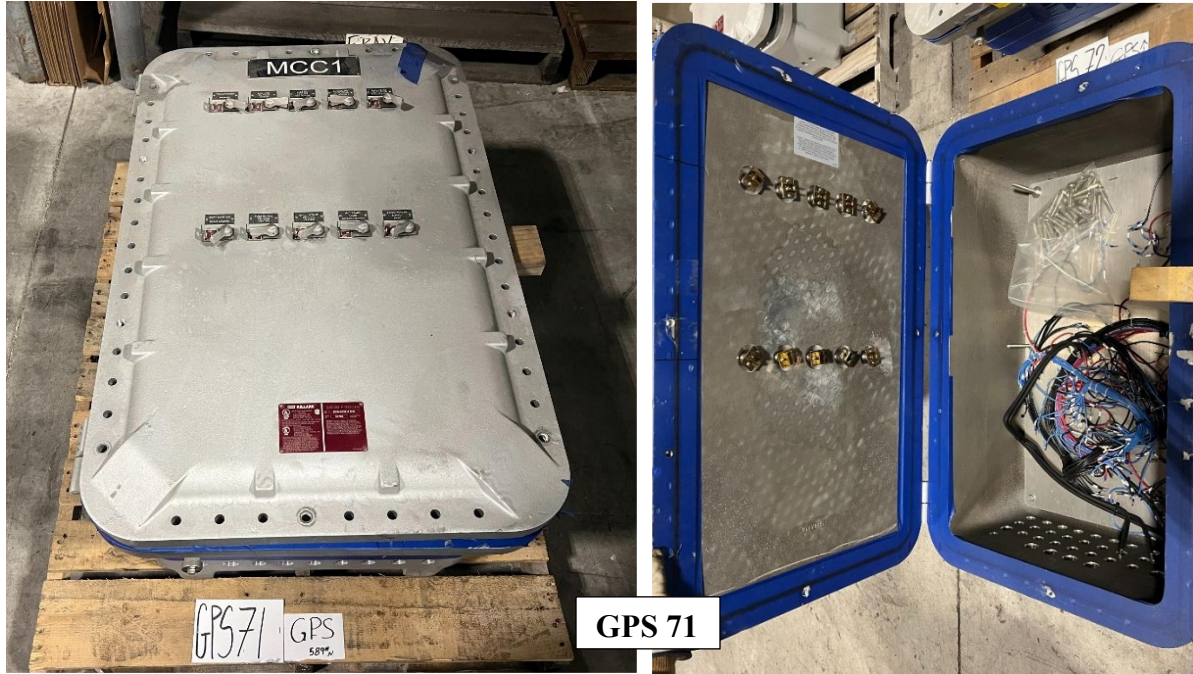


**GPS 70**

**GPS 70**

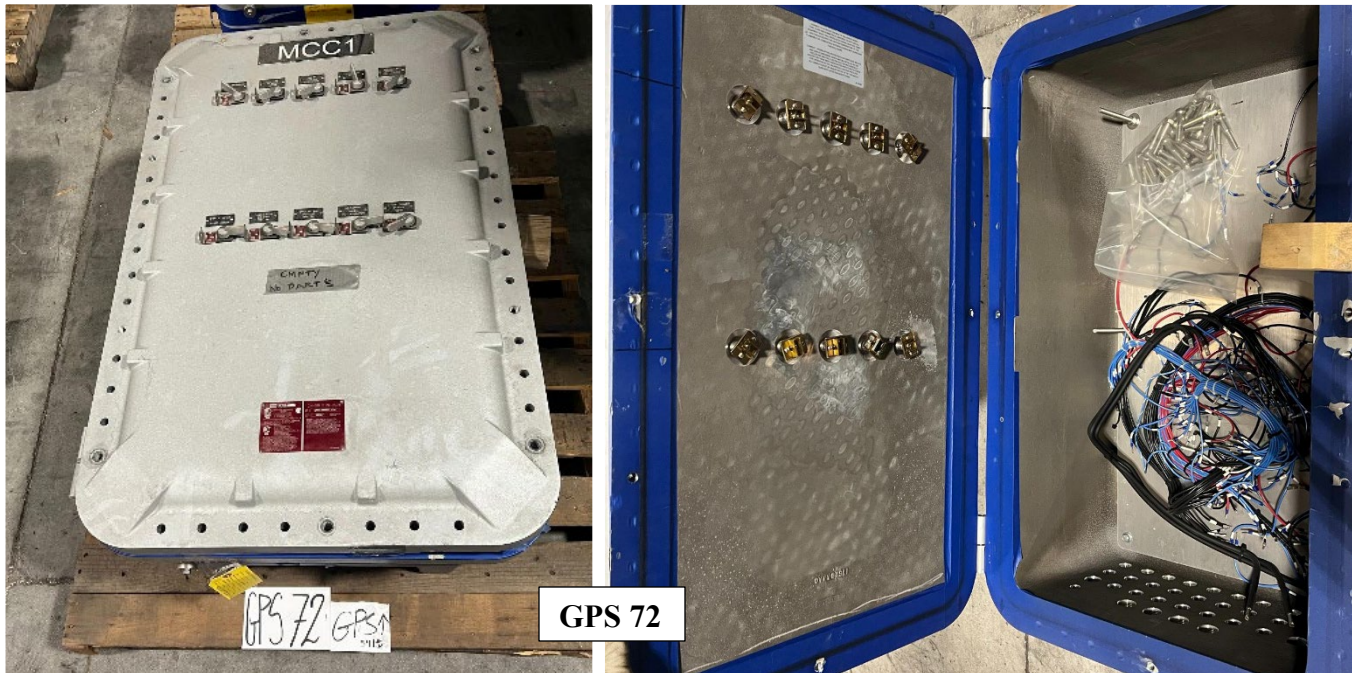


# SLE 26-003 Electrical Sale



GPS 71 GPS 58%

GPS 71

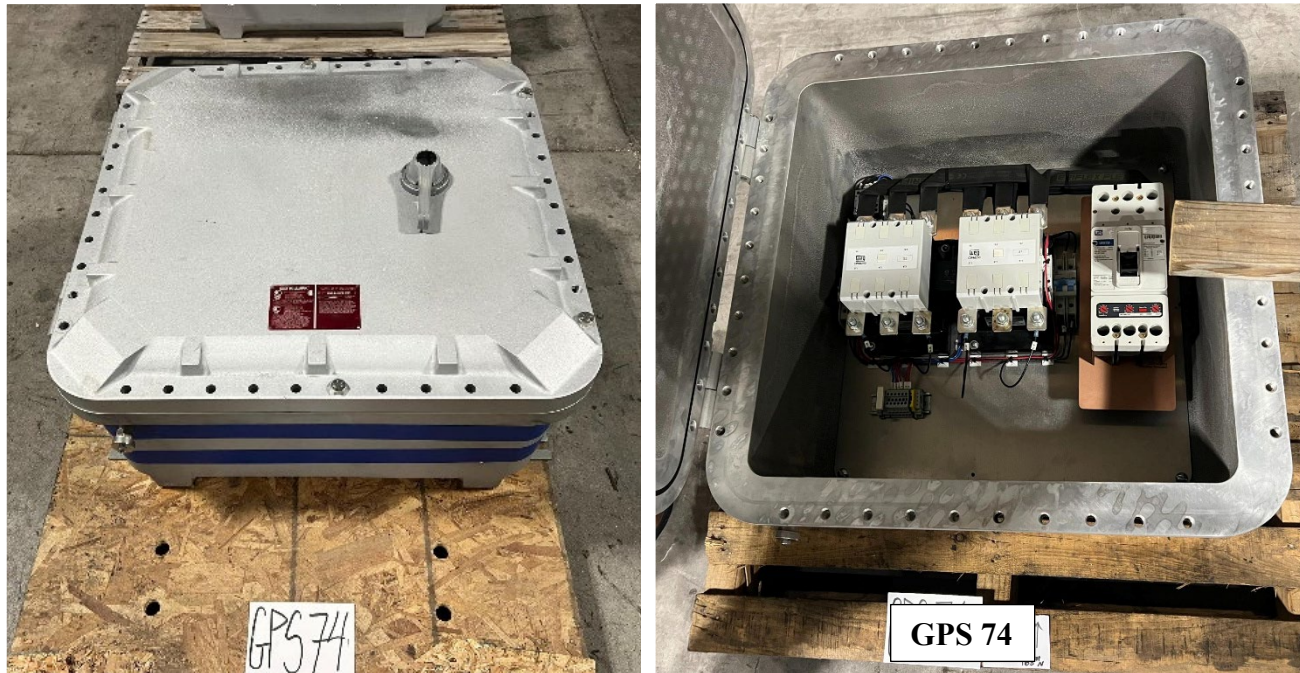
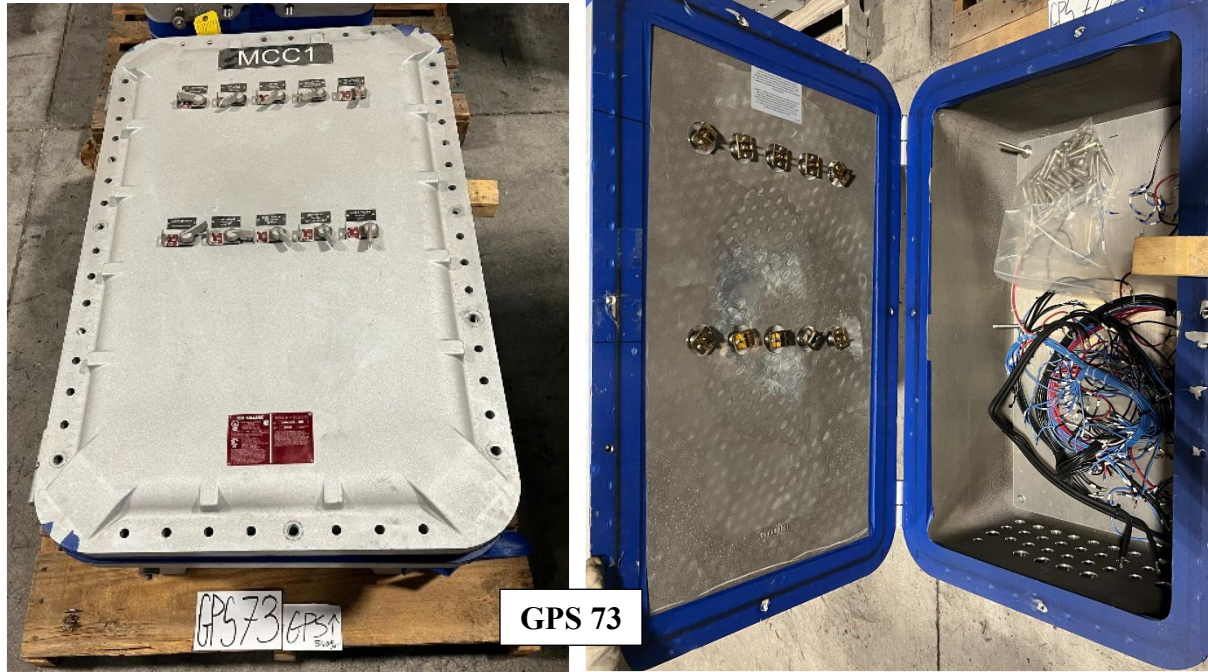


GPS 72 GPS 58%

GPS 72



# SLE 26-003 Electrical Sale



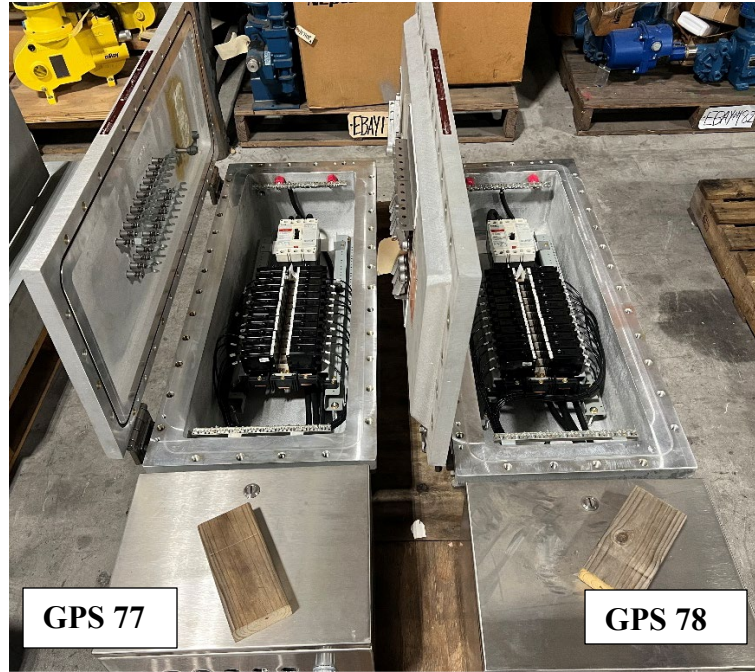


# SLE 26-003 Electrical Sale





# SLE 26-003 Electrical Sale





# SLE 26-003 Electrical Sale



**GPS 82**

